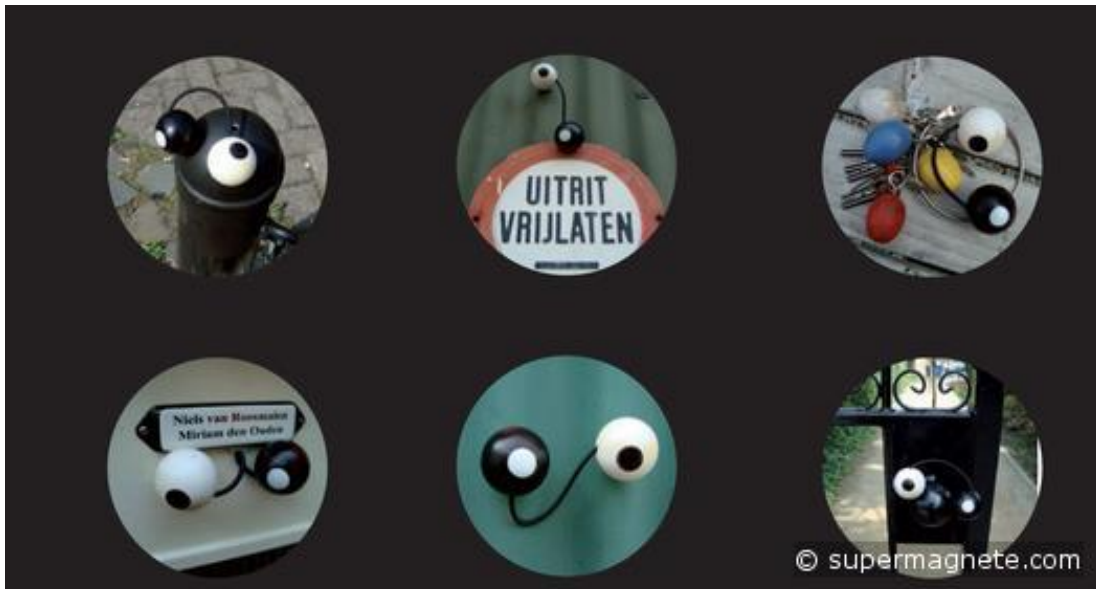


Application No. 248: Ping pong eyes "Catch eye"

Author: Marijke Kamsma, Utrecht, Netherlands, mail@bliksemzwart.nl

These eyes will follow you everywhere...

Marijke Kamsma is an artist and she used our magnets for her favorite topic - eyes. Her eyes always appear in pairs and are mostly black and white - following the Yin and Yang principle. She calls her series "Catch eye".



And this is how the artist did it:

For each pair she painted two ping pong balls black and white and then she soldered a hole into each ball.

Thereafter, she inserted a rod magnet (www.supermagnete.de/eng/S-05-25-N) into each ball. To connect the balls, she glued black yarn into the holes.



Now, the balls can be attached to any metal surface - they are basically everywhere...

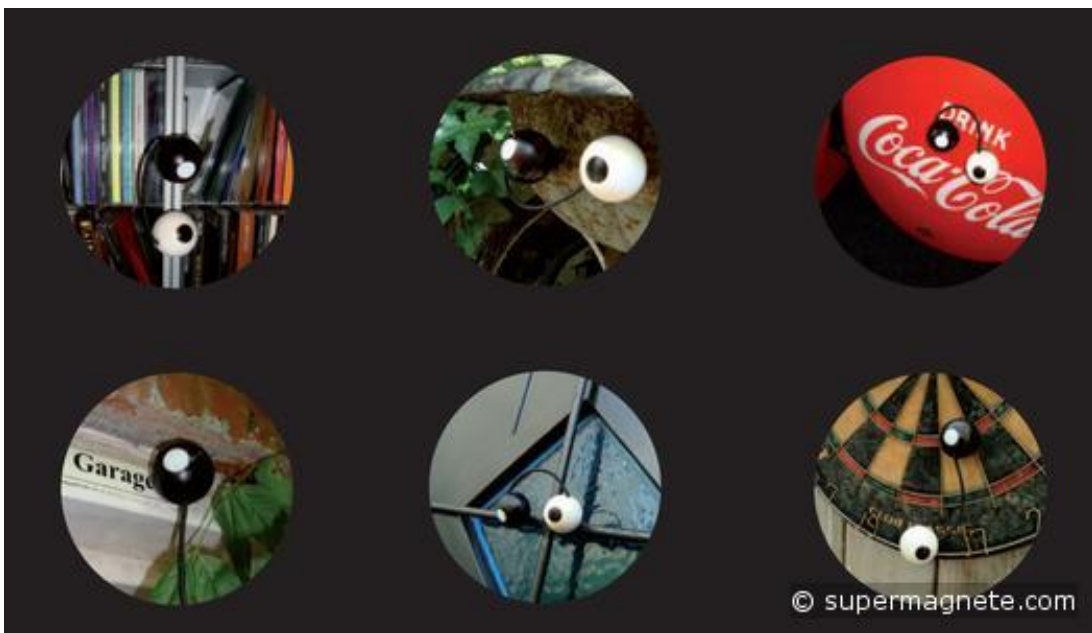
If you would like to contact Marijke, please send her an email at mail@bliksemzwart.nl.

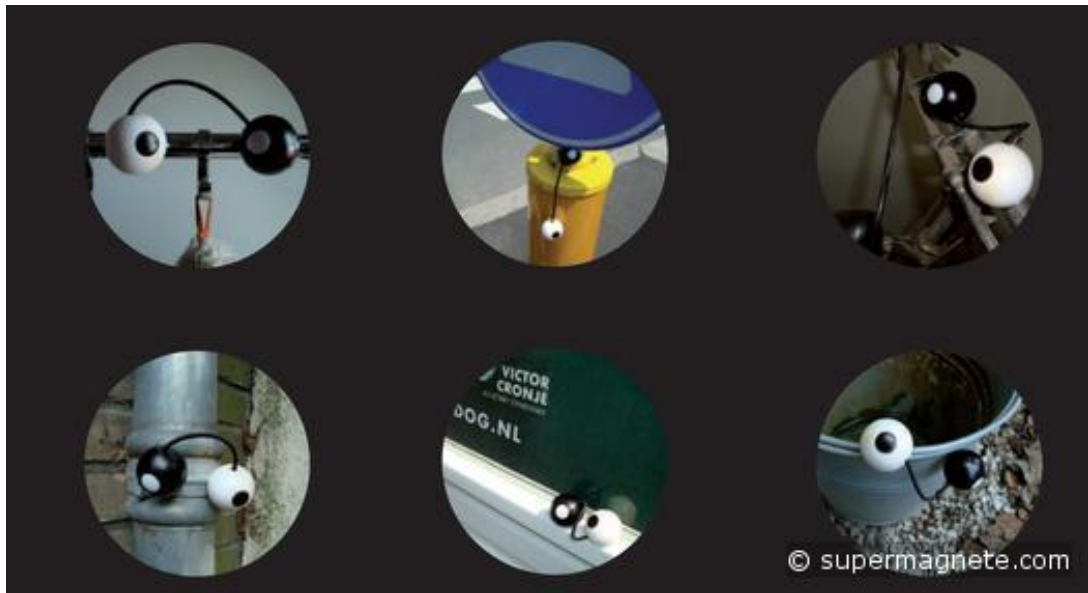




© supermagnete.com







Is it me or do you also feel watched?

Articles used

S-05-25-N (www.supermagnete.de/eng/S-05-25-N)

Online since: 21/07/2009

Have you found an interesting use for our super magnets? Send us a description! If we publish it on our website, you will receive a **supermagnete voucher with a value of EUR 30**. Further Information: www.supermagnete.de/eng/project_terms.php

The copyright for the complete content of this website (text, photos, videos, documents, etc.) lies with the author or with supermagnete.com. The content of this website may neither be copied nor otherwise used without our explicit permission.