

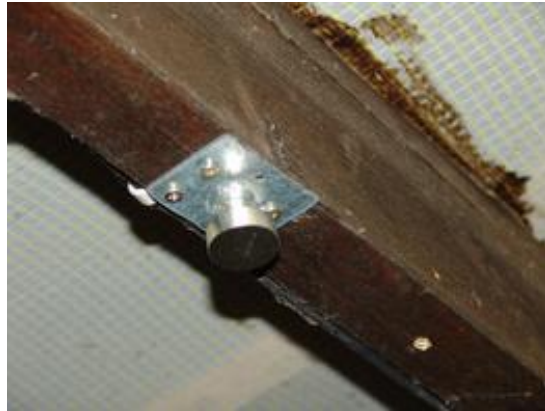
Application No. 93: Hanger for a Roof Box in the Garage

Author: Frank Breter, Teutschenthal, Germany

Whereto with the big roof box? - Onto the ceiling!

The roof box for our car doesn't need to be on the car at all times. When it's not in use, it is stored on the ceiling of our carport.

To make it easier to hang this large and heavy box, I developed a simple hanging mechanism. I mounted metal plates on four points on the wooden beam and glued your disc magnets S-30-10-N (www.supermagnete.de/eng/S-30-10-N) with two component adhesive (www.supermagnete.de/eng/M-15) on the plates.



The underside of the roof box contains a galvanized metal support with a U-nut along the full length of the box. I used somewhat larger magnets because it's not so easy to find the metal surface while holding the box overhead.



The four magnets hold the 20 kg. roof box perfectly and I am quickly able to hang the box from the ceiling on my own.

Note from the supermagnete team: Hanging up such a heavy box is dangerous! Please note our safety tips (www.supermagnete.de/eng/safety.php?highlight=falling#falling).

Articles used

4 x S-30-10-N (www.supermagnete.de/eng/S-30-10-N)

1 x M-15 (www.supermagnete.de/eng/M-15)

Online since: 20/06/2008

Have you found an interesting use for our super magnets? Send us a description! If we publish it on our website, you will receive a **supermagnete voucher with a value of EUR 30**. Further Information: www.supermagnete.de/eng/project_terms.php

The copyright for the complete content of this website (text, photos, videos, documents, etc.) lies with the author or with supermagnete.com. The content of this website may neither be copied nor otherwise used without our explicit permission.